

Ensō Laboratory Information Management System

INDEX:

Introduction	1
Ensō LIMS an overview	1
Functional Coverage	2
The Upcoming Edition	3
Ensō LIMS - Technical	3

PURPOSE:

- ✓ Functional coverage of LIMS
- ✓ Elaborate features
- ✓ How to deal with additional customizations
- ✓ Plan to utilize our skills to develop desired solution
- ✓ List of Satisfied Clients and testimonials

ROI FACTORS

- ✓ Increased efficiency
- ✓ Less human errors
- ✓ Data centralization
- ✓ Work decentralization
- ✓ Supports compliance requirements of NABL, ISO, BIS, NABET, MOEF

Introduction

Enable IT Solutions Pvt Ltd, an enterprise software solutions provider based in Nagpur. We have a rich and diverse domain expertise in a number of areas.

Through years of experience, we have successfully brought innovative tools to empower industry to manage processes perform data analysis and build MIS. The outcome has always showcased improved efficiency and ultimately the profitability.

Ensō LIMS - Perfect match for laboratory requirements!



Enable IT Solutions Pvt Ltd invested heavily on research and evaluation of new techniques for data acquisition and processing using upcoming technology. Enable is one of the pioneers to us the concept of

Internet of Things for process automation infrastructure industry.

Ensō LIMS an Overview

LIMS is an integrated approach towards building a laboratory Information Management platform that will manage all aspects of front office, operations, resource optimization, task scheduling, process

compliance in an analytical laboratory. This is a comprehensive tool that covers complete process of sample tracking and management from test requisition to reporting and invoicing. It is an outcome of joint efforts by industry experts and

technology experts for a period of more than three year. Today LIMS is not just an information system but it's an ERP for laboratory.

Functional Coverage

LIMS will be made available to Delhi Test House from Anshu Systems in an installed model. Installation will cover all modules on an As-Is-Where-Is basis. Functional modules are:

1. **OFFERS (CRM):** This covers a brief sales process to add clients and generate quotations. Monthly Plan can be prepared for collection of samples as well as testing based on offers submitted and approved in a month. Sample registration happens in this module.
2. **Test Life Cycle:** Registered samples are assigned for testing. Status of assigned tasks and workload visible here. Test results are captured in data collection forms which are compliant to IS methodologies; formulas for calculations are applied wherever necessary. Test results sent to HOD for verification. The complete process involves test assignment, testing, verification of results, report approval and invoicing.
3. **HRM:** Basic HR management features to record attendance of staff, leaves, and payroll are covered. Create and assign designations.
4. **INVENTORY & ASSET TRACKING:** Inventory management and asset tracking with maintenance and calibration calendars and calibration reports.
5. **REPORTS:** Number of useful reports are provided to the LIMS user
 - i. **Test Reports:** The verified and approved reports will be available for viewing and printing to send to client.
 - ii. **Sample Tracking:** Sample status report, Assigned workload, completed and pending tasks. Sample disposal as per the retention policy of the lab
 - iii. **Customer Specific Reports:** Accounts, Testing, Recoveries, Feedback.
 - iv. **Payment Recovery:** This report will show the amount of invoices raised and amounts received against those invoices
 - v. **Tax:** Service tax and TDS related reports
 - vi. **Employee Specific Reports:** Attendance, Leaves, Salary sheets & check-in check-out timings.
 - vii. **Inventory & Asset Tracking:** Inventory reports with maintenance and calibration alerts.
 - viii. **Editors' Click:** Complete set of reports needed at the time of audits. This can be customized as per the lab requirement.

“We found Ensō LIMS extremely user-friendly and easy to configure software for laboratory. It is perfectly suitable for Indian users” – **Marshal GeoTest Laboratory, Raipur**

“Ensō-LIMS product and post implementation service by Enable team is extremely satisfactory” – **Unistar Environment and Research Labs Pvt Ltd.**

Clientele:

- Anacon Laboratories Pvt Ltd
- Geotech Services
- Civil Tech Laboratories
- Unistar Environment & Research Labs Pvt. Ltd.
- Marshal GeoTest Laboratories
- TechNext Laboratories
- CSRL Structwel
- Bhavans Research Center
- Construction Excellence Research & Testing Lab
- Nilawar Laboratories
- GeoSystems
- National Council for Cement and Building Materials, Ballabhgarh

++

Features:

- Platform and device independent.
- Easy to configure master lists to enable quick implementations
- Role based access rights
- User-friendly dashboards to track KPI to support audits
- Web-based reporting to customer through customer account login to the portal
- Alerts and reminders through and SMS to staff and customers
- Resource planning availability status and instrument usage log
- Database security and administration

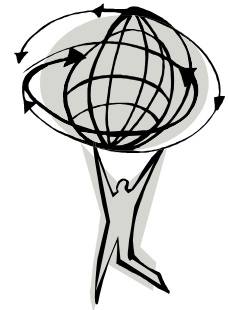
The Upcoming Edition

Ensō LIMS is continuously evolving to meet expectations of industry. The next set of updates which is going to be released by October 2014 will cover:

- A. Projects Planning & Monitoring:** Laboratories providing consultancy services can manage these projects tasks, milestones, billing and resources through this module. It has a linking with LIMS process wherever needed.
- B. Quality Control:** This module helps lab to perform internal quality control activities like random retesting of sample,

uncertainty, customer feedback and other KPI metrics

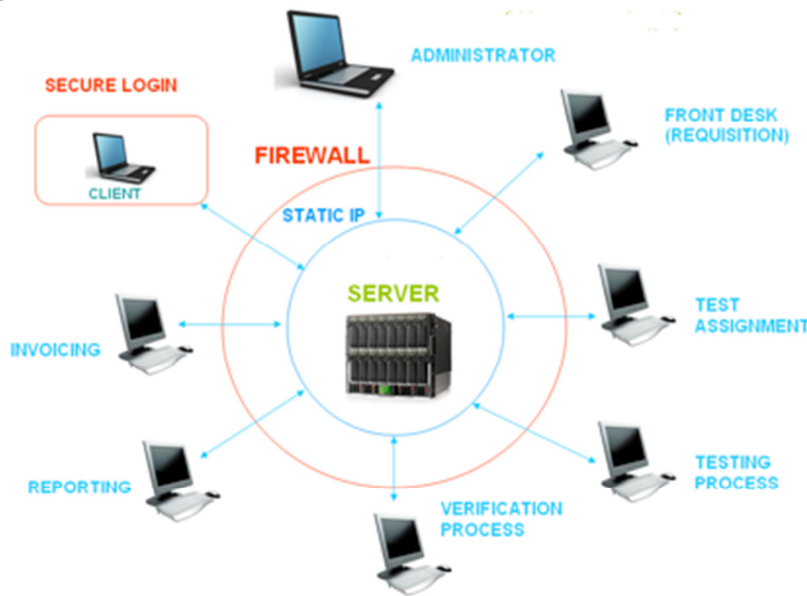
- C. Template Based Form Builder:** To create new test data sheets for new parameters and to add calculation formulae.
- D. Job Sequencing:** During assignment of job this feature will work as a decision support tool for sequencing assignments.
- E. Integration with Tally Accounting Package**
- F. Cloud Version:** LIMS on demand.



“We evaluated few more products including one from a German company, but we found Ensō-LIMS more suitable for our lab” – Nilawar Laboratories, Nagpur

“We have invested a lot of funds on in-house development of LIMS, but today we found Ensō-LIMS to be more complete from a lab ERP point of view and is at a much lesser cost.” – Soiltech India Pvt. Ltd.

E
N
S
O
L
I
M
S



Ensō LIMS – Technical Specs

On the technology front, ENSō LIMS has been developed using an Enterprise-class technology stack: C# with ASP.NET. LIMS with .NET Framework 4.0 has been designed to ensure that large complex data collection form entries can be done within minutes. In addition to that the LIMS is designed keeping in regard the processes being carried while

collecting these data and reporting it with multi level hierarchy and multiple users.

Server side, LIMS requires only SQL SERVER 2008 installed on the Windows server. On the client side, machine with any OS & configuration with browsers such as Mozilla, Chrome etc can be used to access this application.

Enable IT Solutions Pvt Ltd
2 Nalode Lay-out,
Gopal Nagar, Nagpur
Maharashtra – 440-022

Phone: +91-712-6563334
E-mail: sales@enitsol.com

